

VIMEK® LINEUP

Market-leading forest machines for modern thinning and forest care that are **compact, durable, reliable**. Forestry machines that make an impression, not an impact.

VIMEK

FASSI GROUP

No. 1 in Compact Class

VIMEK®

404 T8

The most compact harvester on the market that gives you the best conditions to thin a stand on the forest's terms.



Active
brake link
with adapted
braking force

LED
lighting kit

DASA Forester
bucking system

Multi-tools
such as clearing head and
clamshell bucket

Keto Forst
Keto V4

Improved harvesting head

Powerful hydrostatic
with different drive modes

Disconnectable wheel drive
enables transportation on a dolly trailer

Powerful and
fuel efficient
CAT engine

Dual control
with market's sharpest swing angle

DASA Forester bucking system
H50 or H70

VIMEK

FASSI GROUP

Equipment

Air conditioning
Medium LED lightning
Radio with Bluetooth
Pneumatic chair
Sprinkler system
Filling pump hydraulic oil
Refueling pump diesel
Diesel engine heater
Callstarter diesel engine heater
Crane damping system
Sun blinds
Large LED lightning
Stump treatment system
PC
Rear camera
Color marking
Clamshell bucket
Wheel chains 500/60-22.5 or 405/70-24
Computer caliper
Vimek C12 clearing head
Chainsaw holder
Dolly trailer



See **technical specifications** for Vimek C12 clearing head on page 11.



VIMEK®
**404
T8**

Technical specifications

<u>Engine</u> CAT C2.2T CRDI 55 kW	<u>Weight</u> From 4,500 kg
<u>Swing angle</u> 80°	<u>Crane</u> Vimek – Mowi 2046 Range: 4.60 m
<u>Transmission</u> Hydrostatic / mechanical	<u>Harvesting unit</u> Keto Forst Supreme V4 Weight: 296 kg Max. diameter: 300 mm 10 cc saw engine Nisula 325H (option) Weight: 285 kg Max. diameter: 340 mm 10 cc saw engine
<u>Tyres</u> 500/60-22.5 or 405/70-24	<u>Bucking system</u> DASA H50/H70
<u>Hydraulic</u> 135 L/min	
<u>Ground clearance</u> 40 cm	
<u>Wheelbase</u> 2.10 m	
<u>Length</u> 4.6 m	
<u>Width</u> 1.80 m or 2.05 m	



VIMEK®

404 T8 DUO

Vimek 404 T8 DUO unites the best of both worlds. It combines a harvester and a forwarder in one machine.



Parallel crane
with extended range

LED
lightning kit

Active
brake link

DASA Forester
bucking
system

Multi-tools
such as clamshell
bucket, clearing head
and tiltable grapple

Powerful and
fuel efficient
CAT engine

Dual control
with market's sharpest swing angle

DASA Forester bucking system
H50 or H70

Keto Forst
Keto V4
Improved harvesting head

Powerful hydrostatic
with different drive modes

Disconnectable wheel drive
enables transportation on a dolly trailer

VIMEK

FASSI GROUP

Equipment

Air conditioning
Medium LED lightning
Radio with Bluetooth
Pneumatic chair
Sprinkler system
Filling pump hydraulic oil
Refueling pump diesel
Diesel engine heater
Callstarter diesel engine heater
Crane damping system
Sun blinds
Large LED lightning
Stump treatment system
PC
Rear camera
Tool holder
Color marking
Clamshell bucket
Boogie tracks, trailer
Wheel chains 500/60-22.5 or 405/70-24
Computer caliper
Vimek C12 clearing head
Transport and tool replacement kit
Chainsaw holder
Dolly trailer



See **technical specifications** for Vimek C12 clearing head on page 11.



VIMEK®

404 T8 DUO

Technical specifications

Engine

CAT C2.2T CRDI 55 kW

Swing angle

80°

Transmission

Hydrostatic / mechanical

Tyres

405/70-24 or 500/60-22.5

Hydraulic

135 L/min

Ground clearance

40 cm

Wheelbase

2.10 m

Length

4.65 m

9.25 m including trailer

Width

1.80 m or 2.05 m

Weight

From 4,700 kg, trailer excluded

Loading area

Loading area 3.40 m
with cargo space 2.00 m²

Loading capacity

5,500 kg

Crane

Vimek – Mowi P25

Range: 5.2 m

Lifting capacity: 400 kg at 5.2 m

Gripping area: 0.16 m²

Harvesting unit

Keto Forst Supreme V4

Weight: 296 kg

Max. diameter: 300 mm

10 cc saw engine

Nisula 325H (option)

Weight: 285 kg

Max. diameter: 340 mm

10 cc saw engine

Bucking system

DASA H50/H70



The machines displayed may be extra equipped.

© 2022 Vimek AB. All rights reserved.

Version 1, Mars 2022

www.vimek.com

VIMEK

FASSI GROUP

VIMEK®

610.4

610.4 is the fourth generation of the popular forwarder that makes an impression, not an impact.

Simple instrumentation with advanced system that connects with WiFi

LED lightning kit

Unique tiltable grapple (option) offers outstanding properties when loading / unloading

Harvester head multi-use harvester head

Flat bottom prevents stuff from hooking in

Crane with extension (option)
Range 6.5 m

Disconnectable wheel drive enables transportation on a dolly trailer

Active brake link with adapted braking force

Powerful and fuel efficient **CAT engine**

Powerful hydrostatic Drive modes "Forest", "Road" and "ECO"

Load sensing hydraulic system and improved crane driving characteristics

VIMEK

FASSI GROUP

Equipment

Air conditioning
Medium LED lightning
Radio with Bluetooth
Pneumatic chair
Sprinkler system
Filling pump hydraulic oil
Refueling pump diesel
Diesel engine heater
Callstarter diesel engine heater
Crane damping system
Sun blinds
Large LED lightning
PC
Rear camera
Crane with extension
Tiltable grapple 0.16 m² with Vimek
brake link
Hydraulic radio controlled winch
Chainsaw holder
Hydraulic poles
Roll-fed harvester head
Energy wood head
Boogie tracks, trailer
Wheel chains 500/60-22.5 or
405/70-24
Bucket attachment
Chainsaw holder
Dolly trailer



All Vimek forwarders (in Sweden) are registered as heavy off-road vehicles, which means that they are allowed on public roads.

VIMEK®

610.4

Technical specifications

Engine

CAT C2.2T CRDI 55 kW

Transmission

Hydrostatic / mechanical

Tyres

Front: 500/60-22.5 or 405/70-24

Rear: 400/60-15.5

Hydraulic

120 L/min 175 bar

Ground clearance

40 cm

Length

Standard: 6.90 m

Long: 7.60 m

Width

1.90 m or 2 m

Weight

From 4,900 kg

Loading area

Loading area 3.3 m
with cargo space 1.85 m²

Loading area 4.0 m
with cargo space 1.65 m²

Loading capacity

5,000 kg

Crane

Vimek – Mowi P25

Range: 5.2 m

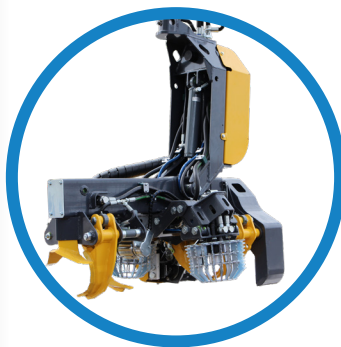
Lifting capacity: 400 kg at 5.2 m

Vimek – Mowi P25T (option)

Range: 6.55 m

Lifting capacity: 400 kg at 5.2 m

Gripping area: 0.16 m²



The machines displayed may be extra equipped.

© 2022 Vimek AB. All rights reserved.

Version 1, Mars 2022

www.vimek.com

VIMEK

FASSI GROUP

VIMEK®

606 TT SE

Well proven, Swedish made machine that delivers driving pleasure and indispensable assistance in gentle forestry work.

LED lightning



Wide accessory program such as bucket attachment and Boogie tracks



Gentle on the ground and environment thanks to its low weight

3,000 kg loading capacity
More than its own weight

Broad cabin with improved driver environment

Mechanical diesel engine without complicated electronics and with low fuel consumption

Articulated centre with hydraulic lock
Stable in all modes so you don't have to hassle with support legs

Disconnectable wheel drive enables transportation on a dolly trailer

VIMEK

FASSI GROUP

Equipment

- Pneumatic chair
- Diesel engine heater
- Callstarter diesel engine heater
- Crane damping system
- Sun blinds
- LED lightning
- Air conditioning
- Hydraulic radio controlled winch
- Radio with Bluetooth
- 220 volt engine heater
- Energy wood head
- Boogie tracks
- Wheel chains
- Bucket attachment
- Chainsaw holder
- Dolly trailer



All Vimek forwarders (in Sweden) are registered as heavy off-road vehicles, which means that they are allowed on public roads.

VIMEK® 606 TT SE

Technical specifications

<u>Engine</u> Kubota D 902-E, 18 kW/3600 rpm	<u>Width</u> 1.80 m
<u>Transmission</u> Variable mechanical	<u>Weight</u> From 2,900 kg
<u>Tyres</u> Front: 405/70-24 Rear: 400/60-15.5	<u>Loading area</u> Loading area 3.0 m with cargo space 1.4 m ²
<u>Hydraulic</u> 43 L/min 175 bar	<u>Loading capacity</u> 3,000 kg
<u>Ground clearance</u> 40 cm	<u>Crane</u> Vimek – Mowi 2046 Range: 4.60 m
<u>Length</u> Standard: 6.20 m Long: 6.70 m	Lifting capacity: 4.6 m 375 kg Gripping area: 0.16 m²

The machines displayed may be extra equipped.
© 2022 Vimek AB. All rights reserved.
Version 1, Mars 2022
www.vimek.com

VIMEK

FASSI GROUP

VIMEK®

870.1



NEXT GENERATION

Technical specifications

8wd:
8WD

Weight:
From 7 tons

Max load:
7 tons

Width:
2.2m

Length:
7.7m

Steering:
Dual steering

Engine:
Caterpillar 55kW

Crane:
Reach 6.7m

The technical specifications and appearance of Next Generation may differ from reality.

VIMEK

FASSI GROUP

Technical specifications

Base machines

Harvesters, excavators, backhoes and larger agricultural tractors

Weight

160 kg

Saw blade diameter

795 mm

Capacity/Max. cutting diameter

Up to 160 mm (limited by stone guard)

Saw blade

3/4" self-tensioning chain

Recommended pressure

170 bar

Recommended flow

66 L/min

Recommended speed

on disc

1100 rpm

Control system

Base machine's controls



Effective clearing head

Vimek C12 is an efficient clearing head unit for small and large base machines. The area of use for the C12 is all kinds of mechanical clearing: plant forest clearing, straw clearing, clearing lining and clearing along roadsides and power lines.

Fits all Vimek harvesters

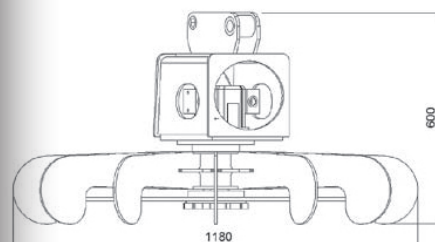
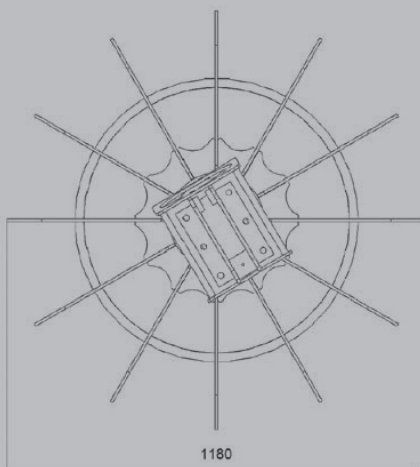
The clearing head can be mounted on any Vimek 404, regardless of model year. The Vimek C12 has a low weight and a very low power requirement, enabling it to be attached to a number of base machines, such as larger agricultural tractors, backhoes, harvesters and excavators.

Quick and simple

Vimek C12 has a patented cutting solution that provides extremely quick cuts.

The cutting solution comprises a self-tensioning standard cutting chain fitted to a circular saw blade. The cutting chain's superior cutting ability means that Vimek C12 can handle dimensions ranging from 1 to 16 cm in diameter, always with equally quick and clean cuts.

A guard around the saw blade prevents stone damage. The cutting chain is easily fitted and is automatically tensioned without any moving parts. Maintenance and sharpening are achieved using general practiced methods for standard cutting chains.



The machines displayed may be extra equipped.

© 2022 Vimek AB. All rights reserved.

Version 1, Mars 2022

www.vimek.com



WWW.VIMEK.COM



FOLLOW VIMEK



facebook.com/vimekab



instagram.com/vimekab



youtube.com/user/vimekab



se.linkedin.com/company/vimek-ab

CONTACT VIMEK

FASSI GROUP

Vimek AB
Allan Jonssons väg 11
SE-922 31 Vindeln
Tel: +46 933-135 15
info@vimek.se • sales@vimek.se

www.vimek.com